

```

FREQUENCIES VARIABLES=QM2
  /NTILES=4
  /STATISTICS=STDDEV VARIANCE RANGE MINIMUM MAXIMUM MEAN MEDIAN MODE
  /HISTOGRAM NORMAL
  /ORDER=ANALYSIS.

```

Frequencies

Notes

	Output Created	26-Oct-2009 07:41:25
Input	Comments	
	Data	/Users/chuckrob/Documents/CLASSES/Stats/grades/qm tests.sav
	Active Dataset	DataSet1
	Filter	<none>
	Weight	<none>
	Split File	<none>
	N of Rows in Working Data File	49
Missing Value Handling	Definition of Missing	User-defined missing values are treated as missing.
	Cases Used	Statistics are based on all cases with valid data.
	Syntax	FREQUENCIES VARIABLES=QM2 /NTILES=4 /STATISTICS=STDDEV VARIANCE RANGE MINIMUM MAXIMUM MEAN MEDIAN MODE /HISTOGRAM NORMAL /ORDER=ANALYSIS.
Resources	Processor Time	0:00:01.113
	Elapsed Time	0:00:01.000

[DataSet1] /Users/chuckrob/Documents/CLASSES/Stats/grades/qm tests.sav

Statistics

QM2

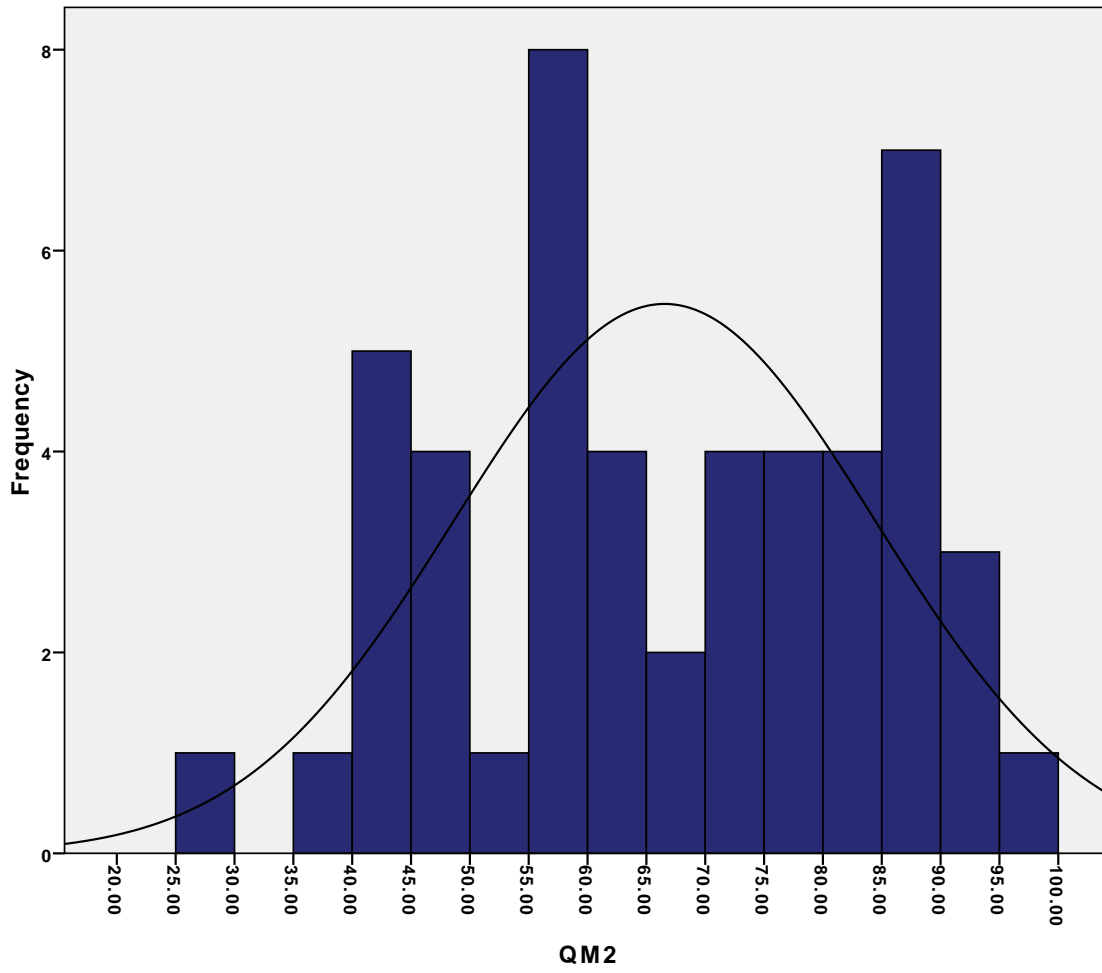
N	Valid	49
	Missing	0
	Mean	66.4898
	Median	68.0000
	Mode	40.00^a
	Std. Deviation	17.91662
	Variance	321.005
	Range	69.00
	Minimum	28.00
	Maximum	97.00
	Percentiles	25
50		68.0000
75		83.5000

a. Multiple modes exist. The smallest value is shown

QM2

		Frequency	Percent	Valid Percent	Cumulative Percent
Valid	28.00	1	2.0	2.0	2.0
	39.00	1	2.0	2.0	4.1
	40.00	3	6.1	6.1	10.2
	43.00	2	4.1	4.1	14.3
	45.00	1	2.0	2.0	16.3
	46.00	1	2.0	2.0	18.4
	48.00	1	2.0	2.0	20.4
	49.00	1	2.0	2.0	22.4
	50.00	1	2.0	2.0	24.5
	55.00	2	4.1	4.1	28.6
	56.00	2	4.1	4.1	32.7
	58.00	2	4.1	4.1	36.7
	59.00	2	4.1	4.1	40.8
	60.00	1	2.0	2.0	42.9
	61.00	1	2.0	2.0	44.9
	62.00	2	4.1	4.1	49.0
	68.00	1	2.0	2.0	51.0
	69.00	1	2.0	2.0	53.1
	70.00	1	2.0	2.0	55.1
	72.00	1	2.0	2.0	57.1
	74.00	2	4.1	4.1	61.2
	78.00	1	2.0	2.0	63.3
	79.00	3	6.1	6.1	69.4
	80.00	1	2.0	2.0	71.4
	82.00	1	2.0	2.0	73.5
	83.00	1	2.0	2.0	75.5
	84.00	1	2.0	2.0	77.6
	85.00	2	4.1	4.1	81.6
	86.00	3	6.1	6.1	87.8
	87.00	1	2.0	2.0	89.8
	89.00	1	2.0	2.0	91.8
	90.00	1	2.0	2.0	93.9
	92.00	2	4.1	4.1	98.0
	97.00	1	2.0	2.0	100.0
Total		49	100.0	100.0	

Histogram



Mean =66.49
Std. Dev. =17.917
N =49